

KÄRCHER

VC 6 Cordless ourFamily VC 6 Cordless Premium ourFamily



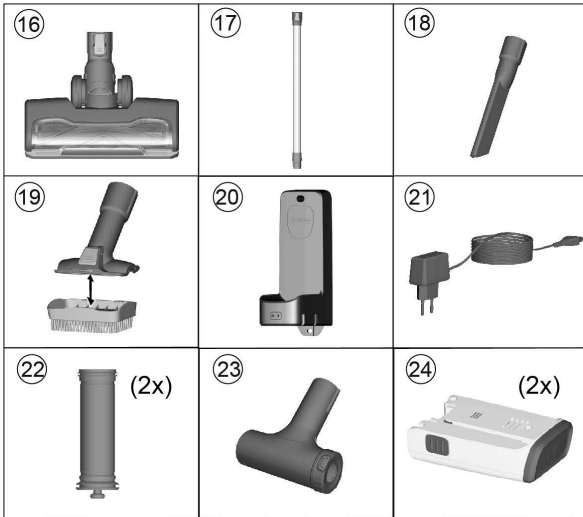
Deutsch	6
English	11
Français	16
Italiano	22
Nederlands	27
Español	32
Português	38
Dansk	43
Norsk	49
Svenska	54
Suomi	59
Ελληνικά	64
Türkçe	70
Русский	75
Magyar	81
Čeština	86
Slovenščina	92
Polski	97
Românește	102
Slovenčina	108
Hrvatski	113
Srpski	119
Български	124
Eesti	130
Latviešu	135
Lietuviškai	140
Українська	146
Қазақша	152
العربية	163

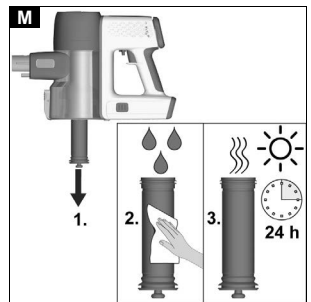
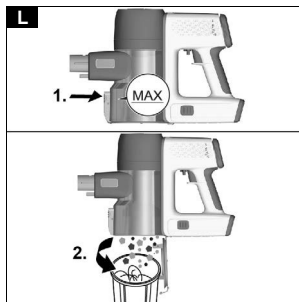
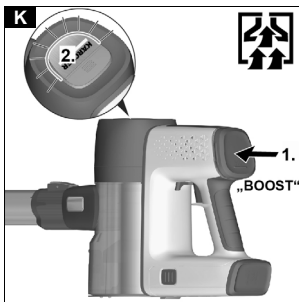
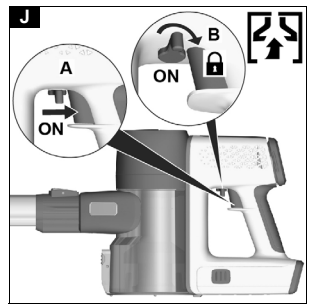
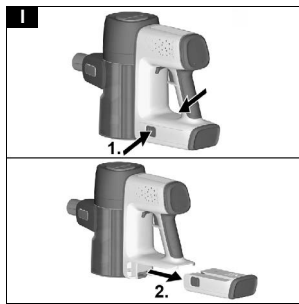
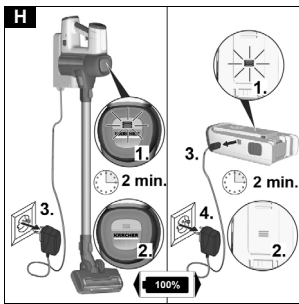
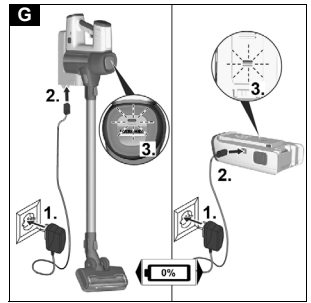
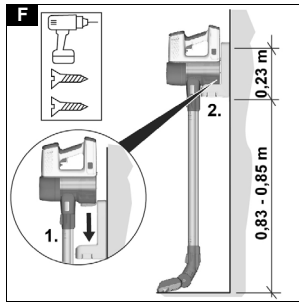
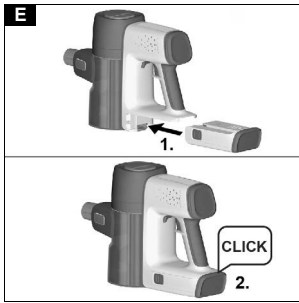
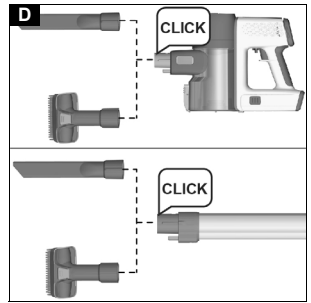
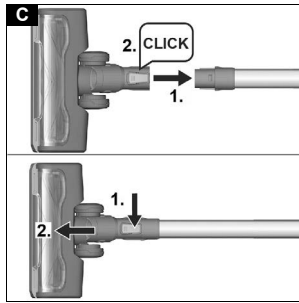
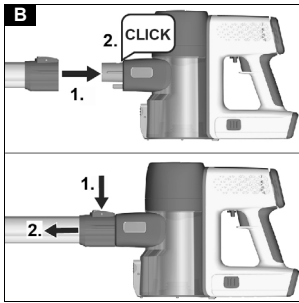


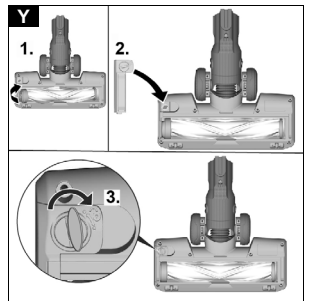
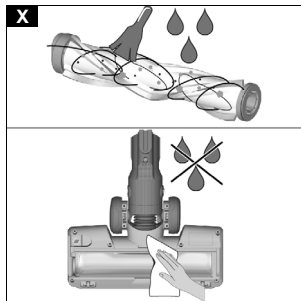
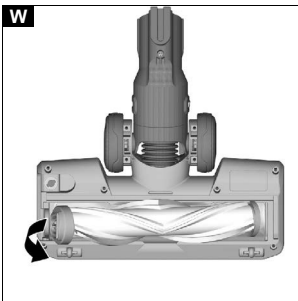
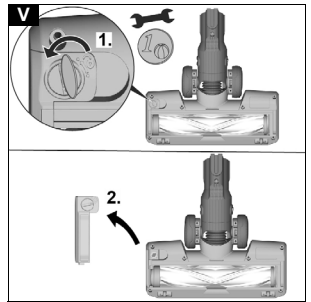
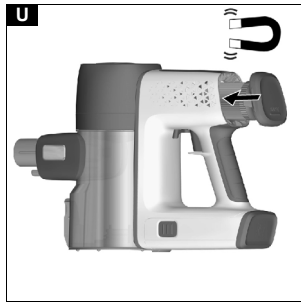
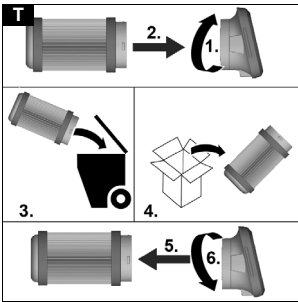
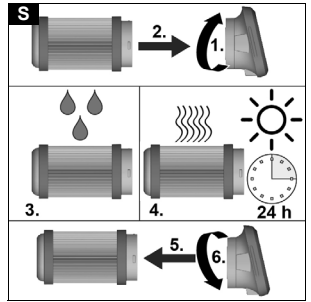
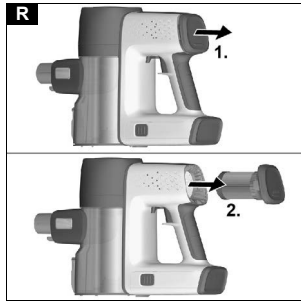
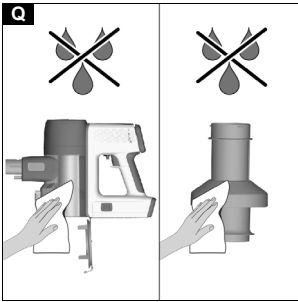
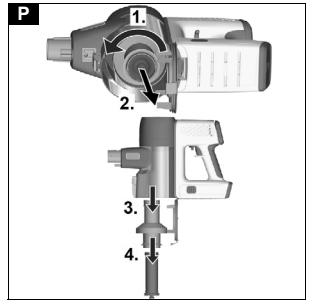
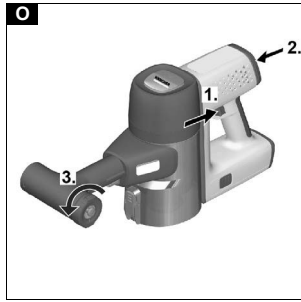
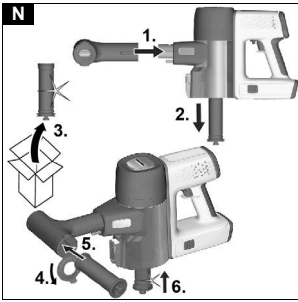
**Register
your product**

www.kaercher.com/welcome

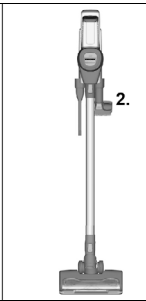
97691470 (08/21)



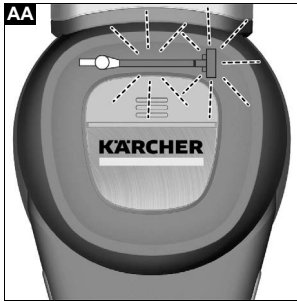




Z



AA



- Die Verstopfung mit einem geeigneten Hilfsmittel entfernen.

Bürstenrolle hat sich z. B. in langen Teppichfransen verfangen.

- Zur Trennung von Bodendüse und Teppichboden das Gerät anheben.

Unnormale Motorgeräusche

Das Zubehör, die Ansaugöffnung am Staubbehälter oder die Saugrohre sind verstopft.

- Die Verstopfung mit einem geeigneten Hilfsmittel entfernen.

Technische Daten

Elektrischer Anschluss

Akkuspannung	V	25,2
Nennleistung	W	250
Akkupacktyp		Li-ION
Ladegerät		30 V TEK
Modell		YLS0241A-E300060
Teilenummer		9.754-741.0
Nennspannung Ladegerät	V	100 - 240
Frequenz	Hz	50 - 60
Ladedauer bei vollständig entladener Batterie	min	220
Schutzklasse		II

Leistungsdaten Gerät

Behälterinhalt	l	0,8
Betriebszeit bei voller Akkuladung im Normalbetrieb	min	50
Betriebszeit bei voller Akkuladung im Maximalbetrieb	min	12

Maße und Gewichte

Gewicht (ohne Zubehör)	kg	1,7
------------------------	----	-----

Technische Änderungen vorbehalten.

Contents

General notes	11
Intended use	11
Environmental protection	11
Accessories and spare parts	11
Warranty	11
Scope of delivery	11
Device description	12
Mounting the wall bracket with charging function	12
Initial startup	12
Operation	13
How to use the Accessories	14
Transportation	14
Storage	14
Care and service	14
Troubleshooting guide	15
Technical data	16

General notes



Read these original operating instructions and the enclosed safety instructions before using the device for the first time. Proceed accordingly.

Keep both books for future reference or for future owners.

Intended use

- Only use the device in private households.
- The device is intended exclusively for cleaning dry surfaces
- The following are not in accordance with the intended use:
 - Cleaning people, animals, plants or clothing on the body.
 - Soaking up water or other fluids.
 - Extraction of glowing ashes, coal, cigarettes or other flammable or easily inflammable substances.
 - Use in the vicinity of explosive or highly flammable substances.

Environmental protection



The packing materials can be recycled. Please dispose of packaging in accordance with the environmental regulations.



Electrical and electronic appliances contain valuable, recyclable materials and often components such as batteries, rechargeable batteries or oil, which - if handled or disposed of incorrectly - can pose a potential threat to human health and the environment. However, these components are required for the correct operation of the appliance. Appliances marked by this symbol are not allowed to be disposed of together with the household rubbish.

Notes on the content materials (REACH)

Current information on content materials can be found at: www.kaercher.com/REACH

Accessories and spare parts

Only use original accessories and original spare parts. They ensure that the appliance will run fault-free and safely.

Information on accessories and spare parts can be found at www.kaercher.com.

Warranty

The warranty conditions issued by our relevant sales company apply in all countries. We shall remedy possible malfunctions on your appliance within the warranty period free of cost, provided that a material or manufacturing defect is the cause. In a warranty case, please contact your dealer (with the purchase receipt) or the next authorised customer service site.

(See overleaf for the address)

Scope of delivery

The scope of delivery for the appliance is shown on the packaging. Check the contents for completeness when unpacking. If any accessories are missing or in the event of any shipping damage, please notify your dealer.

Device description

Depending on the model selected, there are differences in the equipment. The specific equipment is described on the device packaging.

For the illustrations, refer to the graphics page.

Illustration A

- ① Boost function LED indicator light
- ② Battery/battery error message LED indicator light
- ③ Floor nozzle fault LED indicator light
- ④ Suction duct fault LED indicator light
- ⑤ * HEPA-Filter
- ⑥ Boost function button (increases the suction performance)/HEPA filter cover
- ⑦ On/Off switch with locking lever
- ⑧ Handle
- ⑨ Replaceable battery
- ⑩ Battery unlocking button
- ⑪ Air inlet filter
- ⑫ Dust container cover flap
- ⑬ Dust container
- ⑭ Dust container cover flap unlocking button
- ⑮ Dust container suction fitting
- ⑯ Motor-driven electric brush with universal brush roll and LED light
- ⑰ Suction pipe
- ⑱ Crevice nozzle
- ⑲ 2-in-1 upholstery nozzle
- ⑳ Wall bracket with charging function
- ㉑ Charger
- ㉒ ** Air inlet filter (2x)
- ㉓ ** Filter cleaning tool
- ㉔ ** Removable battery (2x)

* HEPA hygiene filter (EN 1822:1998)

** VC 6 Cordless Premium ourFamily

Mounting the wall bracket with charging function

The scope of delivery includes a wall bracket with charging function for correct storage of the vacuum cleaner and accessories.

Note

Mount the wall bracket at a suitable point using the screws and dowels supplied.

For safe storage of the device, the lower screw fastening of the wall bracket should be placed at a distance of 0.83-0.85 m from the floor.

Illustration F

ATTENTION

Material damage due to incorrect installation

Incorrect installation can damage both the device and the floor covering if it falls.

Use suitable mounting tools for wall mounting.

Take the weight of the device and the loading capacity of the installation location into account when selecting the fasteners.

⚠ WARNING

Risk of electric shock and injuries

Make sure there are no electrical cables, water or gas pipes in the wall around the mounting area.

Initial startup

Installing accessories

Note

The multi-function brush is also driven by its own integrated motor and must therefore always be connected directly to the hand-held device or the suction pipe in order to ensure the power supply.

All other accessor parts can also be used directly with the hand-held device or with the suction pipe to increase the reach.

- Push the suction pipe on to the suction fitting of the dust container until it audibly clicks into place.
- Press the unlocking button and remove the suction pipe from the suction fitting.

Illustration B

- Push the floor nozzle on to the suction pipe until it audibly clicks into place.
- Press the unlocking button and remove the floor nozzle from the suction pipe.

Illustration C

- Push accessory, such as the crevice nozzle, on to the suction fitting of the dust container or suction pipe until it audibly clicks into place.

Illustration D

Inserting the battery

ATTENTION

Dirty contacts

Damage to the device and battery

Check the battery mount and the contacts for soiling and clean them as necessary before inserting the battery.

Note

Use only fully charged batteries.

1. Push the battery into the mounting in the device until it audibly latches into place.

Illustration E

Battery charging

Note

The device is not supplied with a charged battery. Fully charge the battery before using it for the first time.

Please observe the enclosed safety instructions for battery powered vacuum cleaners.

Note

The battery can be charged with the device or separately (e.g. for variants with an additional battery).

Note

For a detailed description of the LED displays, see chapter LED display

1. Charge the battery with the device.
 - To charge the device, attach it to the wall bracket with charging function included in the scope of delivery.

Illustration F

2. Charge the battery separately.
 - Place the battery on a flat and safe surface to charge it.

ATTENTION

Material damage due to incorrect battery storage
Incorrect storage during charging can result in the battery e.g. falling down or damaging heat-sensitive surfaces.

Make sure charging of the separate battery takes place on a flat, smooth and heat-insensitive surface.

Furthermore, the battery should not be covered with objects (e.g. fabrics or papers) while it is being charged.

3. Plug the charger into a socket.
 Insert the connecting plug into the charging socket of the wall bracket / battery.
 Depending on the battery status, the 3 LED indicator lights flash or light up green during the charging process.

Illustration G

4. When the device is fully charged, all 3 LED indicator lights light up continuously green for 2 minutes and then go out.

Remove the charger from the socket/charging cable from the battery charging socket and socket.

Illustration H

5. Remove the device from the wall bracket or insert the battery into the device, see chapter *Inserting the battery*

The device is ready for use.

Removing the battery

⚠ WARNING

Uncontrolled startup

Risk of injury

Remove the battery from the device before service and care work or if the device is not going to be used for a long period of time.

1. Press the unlocking button.
2. Remove the battery from the device.

Illustration I

Operation

LED display

The LEDs on the head of the device and on the battery indicate information about the battery status, boost mode and error messages.

The charging state of the battery is indicated by the 3 green LEDs on the device as well as by the 3 green LEDs on the battery.

See figure A on the graphics page and chapter *Device description*

Battery charging state

LED	Duration of lighting	Meaning
1st LED flashes green	1 s on / 1 s off	Battery charged below 7.5 %
1st LED lights up green	continuously	Battery charged below 40 %
1st and 2nd LEDs light up green	continuously	Battery charged below 70 %
3 LEDs light up green	continuously	Battery charged above 70 %
3 LEDs flash green	125 ms on / 125 ms off	Battery fault, after 30 s the signal goes out

The charging progress of the battery is indicated by the 3 green LEDs on the device as well as by the 3 green

LEDs on the battery. The LEDs only light up when the battery is correctly installed.

While charging

LED	Duration of lighting	Meaning
1st LED flashes green	0.2 s from off to on / 0.6 s on / 0.2 s from on to off / 1 s off	Battery charging, battery charged below 40 %
1st LED lights up green 2nd LED flashes green	continuously 0.2 s from off to on / 0.6 s on / 0.2 s from on to off / 1 s off	Battery charging, battery charged below 70 %
1st and 2nd LEDs light up green 3rd LED flashes green	continuously 0.2 s from off to on / 0.6 s on / 0.2 s from on to off / 1 s off	Battery charging, battery charged below 99 %
3 LEDs light up green	2 min continuous lighting, then off	Battery fully charged

Error message

LED	Duration of lighting	Meaning
Suction duct flashes red	125 ms on / 125 ms off	Suction channel clogged
Floor nozzle LED flashes red	125 ms on / 125 ms off	Floor nozzle blocked

See also chapter *Troubleshooting guide*

Boost mode

LED	Duration of lighting	Meaning
LED half ring lights up green	continuously	Boost mode on

Changing accessories

To change accessories, see chapter *Installing accessories*

Vacuuming

1. Install the required accessories, see chapter *Installing accessories*.
2. Switch on the device, depending on cleaning requirements:
 - Press the On/Off switch and keep it pressed during operation.
 - or
 - Turn the locking lever to switch the device directly to continuous operation.

Illustration J

3. If necessary, press the Boost button to increase the dust intake.

Illustration K

Note

When the device is switched off, the boost function is automatically disabled.
The boost function can also be switched off by pressing the Boost button again.

Ending operation

1. Switch off the device.
Release the On/Off switch or disable the locking lever.

Note

To ensure an optimum suction performance, empty the dust container and clean the air inlet filter after each use.

Empty the dust container at the latest when the "MAX" marking is reached.

2. Remove the suction pipe or accessory.
3. Empty the dust container into a waste container.
 - a Press the unlocking button.
The dust container flap opens.
 - b Empty the dust container.

Illustration L

4. To close the flap, push the dust container up until it clicks into place.
5. Clean the air inlet filter, see chapter *Cleaning the air inlet filter*
6. Attach the device to the wall bracket with charging function.

Illustration F

7. Store the accessories.

Illustration Z

8. Charge the device with a battery or only a battery, see chapter *Battery charging*.

How to use the Accessories

General instructions for use

- Which accessories are included in the scope of delivery is shown on the device packaging.
- Accessories not included in the packaging can be purchased in a KÄRCHER specialist shop or from www.kaercher.com.
- Test the accessory at an inconspicuous point before using it in a sensitive area.
- Follow the manufacturer's cleaning instructions.
- Connect the motor-driven electric nozzle to the suction pipe or the hand-held device.
- Also connect the other accessory parts, such as crevice nozzle, to the hand-held device or push it directly onto the suction pipe to increase the reach.

Motor-driven multi-function brush

Ideal for hard floors and carpets.

The motor-driven multi-function brush removes dirt stuck between the carpet fibres particularly effectively.

2-in-1 upholstery nozzle

The frame with the surrounding bristles can be taken off pressing the unlocking button.

- The soft brush is suitable for furniture with hard surfaces
- The wide brush is used to clean upholstered furniture, curtains, etc.

Crevice nozzle

For edges, joints, heaters and areas that are difficult to reach.

Soft brush

The soft brush has particularly soft bristles for cleaning sensitive surfaces such as keyboards, lamps, etc.

Flexible crevice nozzle

The flexible crevice nozzle increases the reach. For cleaning hard-to-reach places, such as between the car seats.

Flexible extension hose

Due to the extension and flexibility, hard-to-reach areas such as in the car can be reached and cleaned.

Large upholstery nozzle

For cleaning textile surfaces such as sofas, armchairs, mattresses, car seats, etc.

Soft motor-driven brush (Hard floor nozzle)

For hard floors and sensitive wooden floors. Extracts coarse and fine dirt simultaneously.

Transportation

The battery has been tested in accordance with the relevant rules for international transport, and can be transported / shipped.

Storage

ATTENTION

Moisture and heat

Risk of damage

Store battery packs indoors only, at low humidity and temperatures below 20°C.

The battery pack display shows the current charging state during storage.

Care and service

General care instructions

- Clean the device and plastic accessory parts with a commonly available plastic cleaner.

Cleaning the air inlet filter

Note

The device can be cleaned manually or using a filter cleaning device.

Cleaning the air inlet filter manually

- 1 Switch off the device.
- 2 Pull the soiled air inlet filter down at the filter stick, carefully beat it and clean it with a damp cloth or running water.

Illustration M

- a Reinsert the fully dried air inlet filter.
- b Check for correct seating.

Cleaning the air inlet filter with a filter cleaning device

Note

A new air inlet filter must be installed in the dust container during filter cleaning.

- 1 Switch off the device.
- 2 Push the filter cleaning device on to the suction pipe branch and pull the air inlet filter out of the device using the filter stick.

Illustration N

- a Push the soiled air inlet filter into the filter cleaning device.
- b Insert a new air inlet filter into the dust container.
- c Switch on the device and let it run in boost mode while turning the side cover.

Illustration O

- d Remove the cleaned air inlet filter from the filter cleaning tool and reinsert it in the dust container after removing the new air inlet filter.
- e Check that the air inlet filter is correctly seated.

Cleaning the dust container and cyclone filter

Note

Before cleaning the dust container and cyclone filter, empty the dust container, see chapter *Ending operation*

- 1 Switch off the device.
- 2 Remove the cyclone filter and air inlet filter.
 - a Remove the cyclone filter from the dust container by turning it anticlockwise.
 - b Remove the cyclone filter from the dust container and take the air inlet filter out of the cyclone filter.

Illustration P

ATTENTION

Short circuit hazard

There are cables or contacts in the dust container and cyclone filter for the power supply. Make sure that the cables or contacts do not get wet when cleaning.

- 3 Clean the dust container and cyclone filter with a soft brush or a slightly damp cloth

Illustration Q

- 4 Clean the air inlet filter, see chapter *Cleaning the air inlet filter*
- 5 Re-insert the dry dust container and cyclone filter with air inlet filter into the device and close the flap.

Cleaning the HEPA filter/replacing the HEPA filter

Note

The HEPA filter ensures clean exhaust air.

- Clean the HEPA filter if it is visibly dirty.
- Replace the HEPA filter if there is visible damage.

1. Switch off the device.
2. **Cleaning the HEPA filter.**
 - a Pull the HEPA filter cover with the HEPA filter out of the device.

Illustration R

ATTENTION

Short circuit hazard

Power supply cables or contacts are located in the cover of the HEPA filter.

Before cleaning with water, remove the cover of the HEPA filter so that the cables or contacts do not get wet.

3. Carefully knock off the HEPA filter or if it is very dirty:
 - a Unscrew/remove the cover of the HEPA filter.
 - b Clean the HEPA filter under running water. Do not rub or brush off.
 - c Then let the HEPA filter dry completely.

Illustration S

- d Fasten/screw on the HEPA filter cover.

ATTENTION

Health risk

HEPA filters that are not completely dry when installed in the device can be a breeding ground for spores and mould.

Make sure that the HEPA filter is completely dry on installation.

4. Insert the dry HEPA filter into the device.

Illustration U

Note

The HEPA filter only needs to be inserted into the device, a magnet allows the HEPA filter to snap into place automatically.

5. Replacing the HEPA filter

- a Pull the HEPA filter cover with the HEPA filter out of the device.

Illustration R
 - b Unscrew/pull off the cover of the HEPA filter and dispose of the used filter.
 - c Attach/screw on the new HEPA filter cover.

Illustration T
6. Insert the HEPA filter into the device.

Illustration U

Cleaning the multi-function nozzle

1. Switch off the device.
2. Remove accessories.

ATTENTION

Short circuit hazard

The multi-function brush contains electrical components.

You must not immerse the multi-function brush in water or clean it with a damp cloth.

3. Clean the multi-function brush.
 - a Unlock the brush roll cover / support with a coin or other object and remove it.

Illustration V

- b Remove the brush roll from the brush opening in the direction of the arrow.

Illustration W

- c Remove the dirt e.g. with a brush. If necessary, the brush roll can be cleaned under running water.

The brush roll must be completely dry before re-installation.

- d Carefully clean the brush opening with a cloth or soft brush.

Illustration X

- e Insert the brush roll into the brush opening.
- f Lock the brush roll with a coin or other object.

Illustration Y

Troubleshooting guide

Malfunctions often have simple causes that you can remedy yourself using the following overview. When in doubt, or in the case of malfunctions not mentioned here, please contact your authorised Customer Service.

The device does not start up

Battery is empty.

- Charge the rechargeable battery.
- Battery is not inserted correctly.
- Push the battery into the mount until it locks into place.

Battery is defective.

- Replace the battery.

The battery is not charging

The charging plug/mains plug is not connected correctly.

- Connect the charging plug/mains plug correctly.

The socket is defective.

- Check that the socket is working.

The wrong charger is being used

- Check that the correct charger is being used.

The device stops during operation or the suction performance is poor

The battery has overheated.

- Stop work and wait until the battery temperature is back in the normal range.

The accessories, the suction opening on the dust container or the suction pipes are clogged.

- Remove the clog with a suitable aid.